

Residential & Small Business Energy Efficiency

New Haven Middlesex Realtors Presentation

BROUGHT TO YOU BY

EVERSOURCE



Part of the AVANGRID Family

PROUD SPONSORS OF





Empowering Connecticut to Make Smart Energy Choices



Eversource, CNG, SCG and UI, the Energy Efficiency Board, Connecticut Green Bank, and the State have united on a shared mission - to provide Connecticut residents and businesses the resources they need to **save money and use clean energy.**

The Energize Connecticut initiative empowers our communities to make smart energy choices, now and in the future.



Award-Winning Energy Efficiency



Top-ten states on the American Council for an Energy-Efficient Economy (ACEEE) State Energy Efficiency Scorecard

At an average of 7 cents/kWh, it is **less expensive to save energy through Connecticut's existing award-winning efficiency programs** than it is through any other means.

“Thanks to Eversource’s energy efficiency expertise, our volunteers and other partners, we achieved our goal of creating a more affordable housing option for the Hartford community and be the first Habitat organization in Connecticut to build a Zero Energy Ready Home.”

-Karraine Moody, Hartford Habitat for Humanity

Today's Agenda

1

Residential Weatherization

2

Home Energy Solutions

3

Residential New Construction

4

Small Business Energy Advantage

5

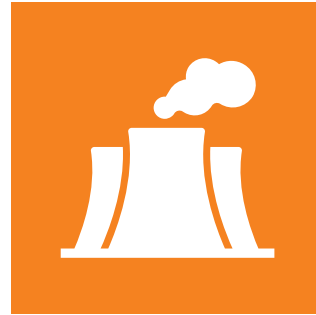
Questions



What is Energy Efficiency?



Energy efficiency helps to reduce energy use and therefore save you money



Energy efficiency reduces air pollutants, carbon and greenhouse gases



Energy efficiency creates jobs



Programs are funded by a charge on electric and natural gas bills

Energy Efficiency

Weatherization



Weatherization

The process of making your home better protected against the effects of changing weather.





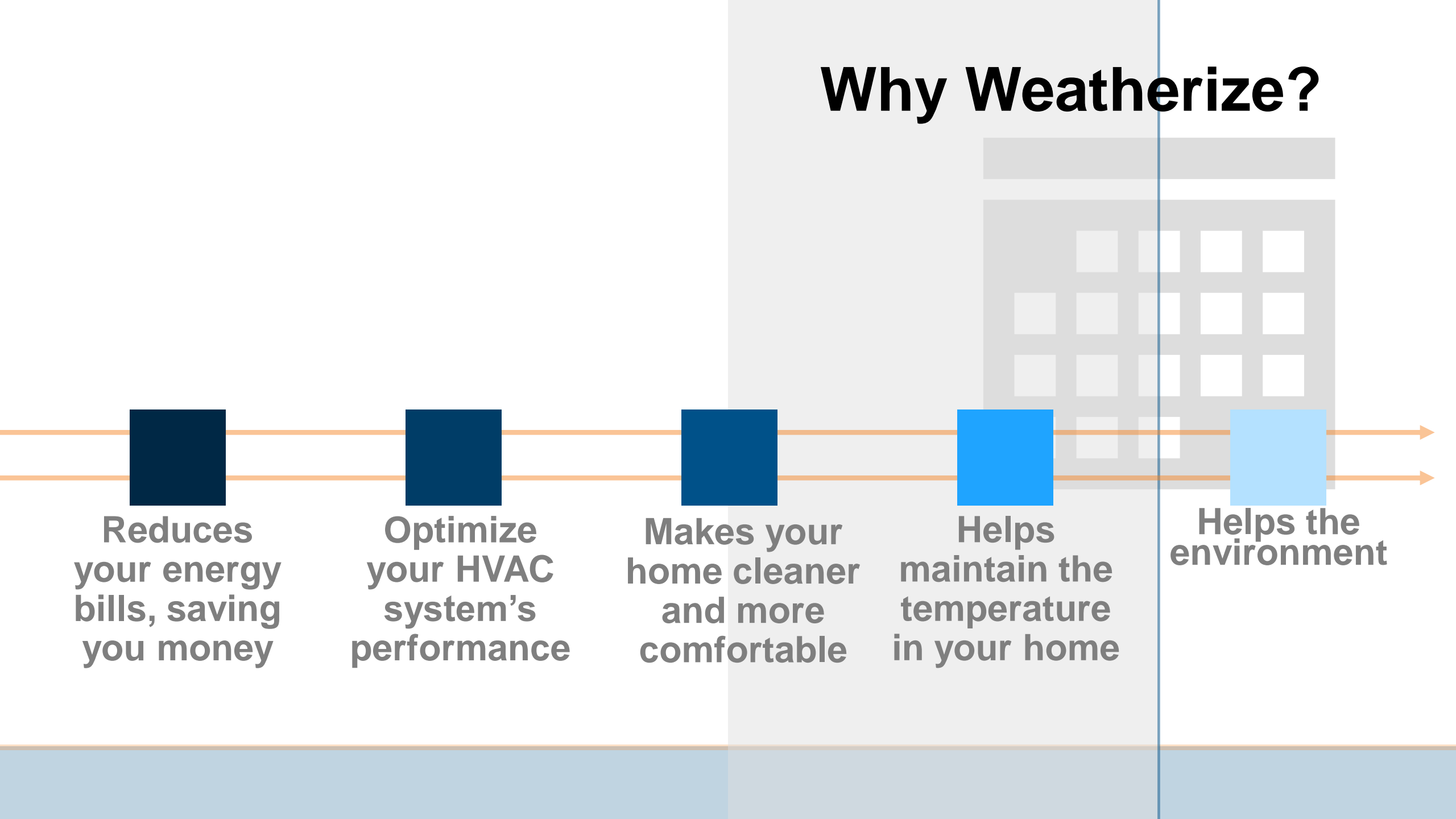
1.4 million homes
account for **50%** of
building energy use in the state

Nearly **80%**
built before 1980

55%
delivered fuels
(oil, propane)

34%
of state's
energy
consumption

Why Weatherize?



Reduces your energy bills, saving you money

Optimize your HVAC system's performance

Makes your home cleaner and more comfortable

Helps maintain the temperature in your home

Helps the environment



Home Energy Solutions

Home Energy Solutions

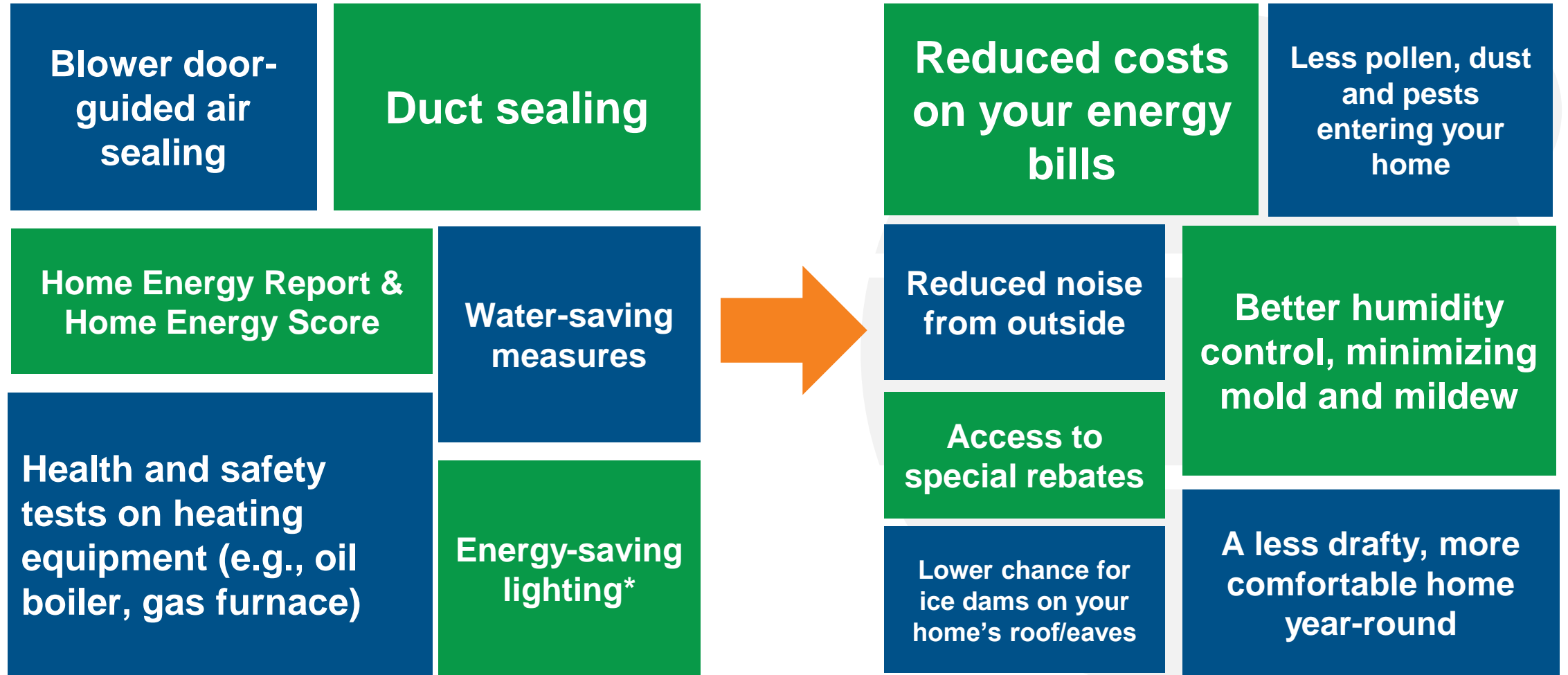
Assessment and service that **treats the home as a system** to:

- Increase efficiency
- Optimize comfort

Available to all qualifying **homeowner & rental customers** for a \$50 copay

No copay for income eligible





Services & Benefits

The **ABGCs** of Envelope Sealing

Attic

Basement

Garage (adjacent to home)

Conditioned Space



This Photo by Unknown Author is licensed under [CC BY](https://creativecommons.org/licenses/by/4.0/)



Certified Energy
Technicians assess
the home



Make on-the-spot
energy
improvements



Recommend
further
opportunities to
save

Home Energy Solutions



Receive services
valued at up to
\$1,000



Receive access to
special rebates
available only to
program
participants

Insulation

ENERGY STAR
certified appliances



Participants save
an average of
\$180 a year on
energy bills from
these services



You may be eligible
for a rebate **for up
to 75% off your
approved
insulation project**

U.S. Department of Energy Home Energy Score

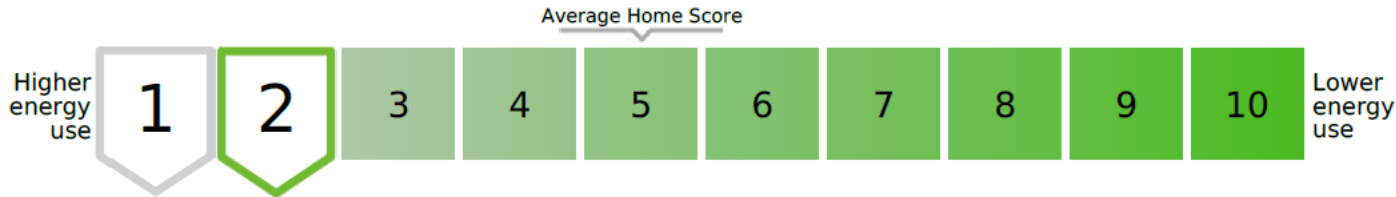


DOE Home Energy Score

19 High Ridge Rd
Stamford CT 06905

PROJECTED SCORE **2**

YEAR BUILT: 1950
CONDITIONED FLOOR AREA: 2,500 FT²
NUMBER OF BEDROOMS: 4



STARTING SCORE

SCORE WITH IMPROVEMENTS

Estimated annual savings **\$629**

The U.S. Department of Energy's Home Energy Score assesses the energy efficiency of a home based on its structure and heating, cooling, and hot water systems. For more information visit HomeEnergyScore.gov.



DOE Home Energy Score

19 High Ridge Rd
Stamford CT 06905

PROJECTED SCORE **2**

Home Facts

The Home Energy Score's Home Facts includes details about the home's current structure, systems, and estimated energy use. For more information about how the score is calculated, visit our website at HomeEnergyScore.gov.

About This Home

HOME CONSTRUCTION		ASSESSMENT	
Year built	1950	Type	Initial
Number of bedrooms	4	Assessor name	101019
Stories above ground level	2	Scoring tool version	2019.2.4
Interior floor-to-ceiling height	8 ft		
Conditioned floor area	2,500 ft ²		
Direction faced by front of house	Southeast		
House Shape	Rectangle		
Air leakage rate	3500 CFM50		

Estimated Annual Energy Use

ENERGY USE BY TYPE	
Total	241 MBtus
Score basis	172 MBtus
Energy use per square foot	71 kBtu / ft ²
Electricity	10,409 kWh
Natural gas	1,430 therms

ENERGY COSTS	
This home's annual energy cost estimate	\$3,985
This home's energy cost per square foot	\$1.59 / ft ²
Electricity rate	\$0.188 / kWh
Natural gas rate	\$1.418 / therm
Comparable Reference energy cost estimate*	\$4,050

DEFINITIONS & CONVERSIONS

MBtu	Million British thermal units; generic energy unit
kBtu	Thousand British thermal units; generic energy unit
kWh	Kilowatt-hour; electricity unit
Therm	100,000 Btu; heat energy unit
Electricity conversion	1 MBTU = 293 kWh
Heat conversion	1 MBTU = 10 therms

We reached **41,040** homes through Home Energy Solutions in **2022**, including over **6,400** low-income households.



**More Work
to Do**

Statewide goal to weatherize **80%** of residential homes by 2030



How to Enroll



**Call 877-947-3873
(877-WISE-USE)**



**HES-IE
Application
Available on
EnergizeCT.com**

Residential New Construction





Incentives are available to lower your energy costs and build a comfortable, energy efficient home.



Building a new home presents a great opportunity to minimize energy costs, maximize comfort, and do your part for a clean energy future



Designing and building your home with the latest energy-efficient technologies gives you greater comfort and convenience and healthier indoor environments.

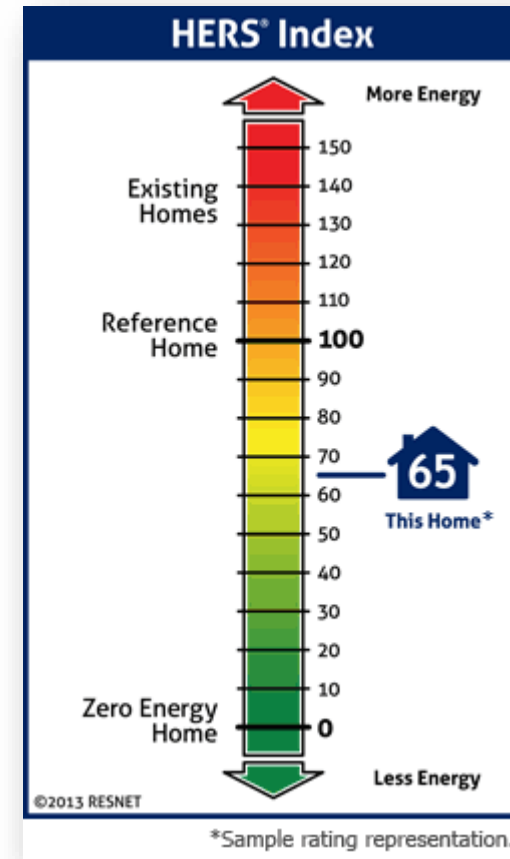


Building a high-performance home gives you the satisfaction of doing your part to reduce greenhouse gas emissions and live more sustainably.

Residential New Construction Overview

What is a HERS Index?

- The Home Energy Rating System (HERS) index is the industry standard used to measure the energy efficiency of a newly constructed dwelling.
- Determined by a Home Energy Rater, who assesses the dwelling units, and uses accredited software to compare the performance characteristics of the unit, to a similar size unit built to code.
- Every point below 100 on the HERS index, translates to 1% energy savings compared to code.



A Path Towards Decarbonizing Buildings

1

Energy Efficiency

2

High-Efficiency Electrical Systems

3

On-Site Renewables

4

Grid Interactivity

5

Off-Site Renewables & RECs

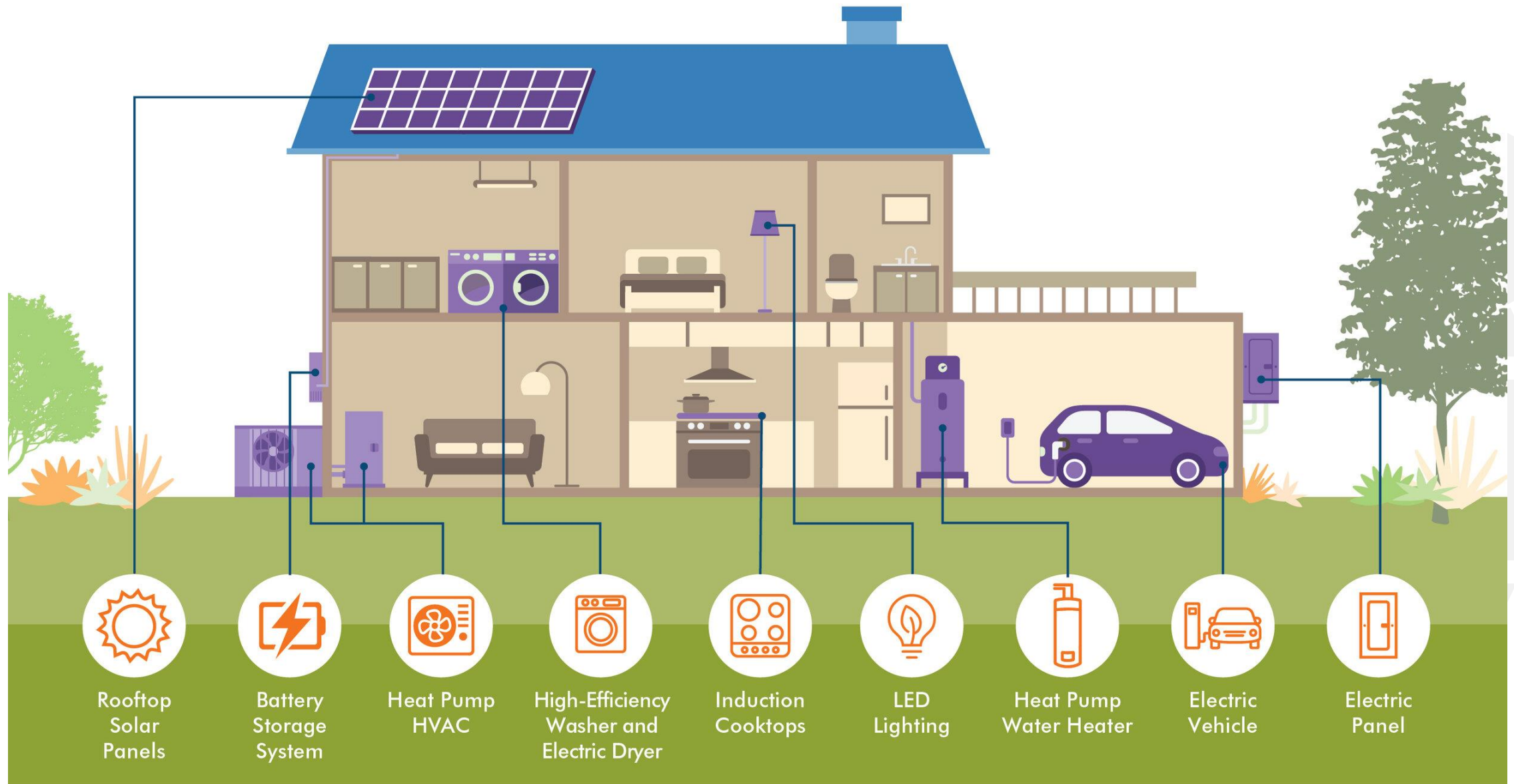


Image Source: <https://www.acterra.org/greenhome>



Small Business Energy Advantage

Small Business Energy Advantage

- **Financial Incentives** to reduce upfront investments
- **0% on-bill financing** for balance of the selected measures*
- **Ease of Use** with a turnkey approach and utility-qualified contractors
- Find out more at [EnergizeCT.com](https://www.energizect.com)
- Call 1-877-WISE USE (877-947-3873) to sign up



**Restrictions do apply to accounts carrying balances, late payments, or new accounts*



Questions

Thank you

BROUGHT TO YOU BY

EVERSOURCE



Part of the AVANGRID Family

PROUD SPONSORS OF

